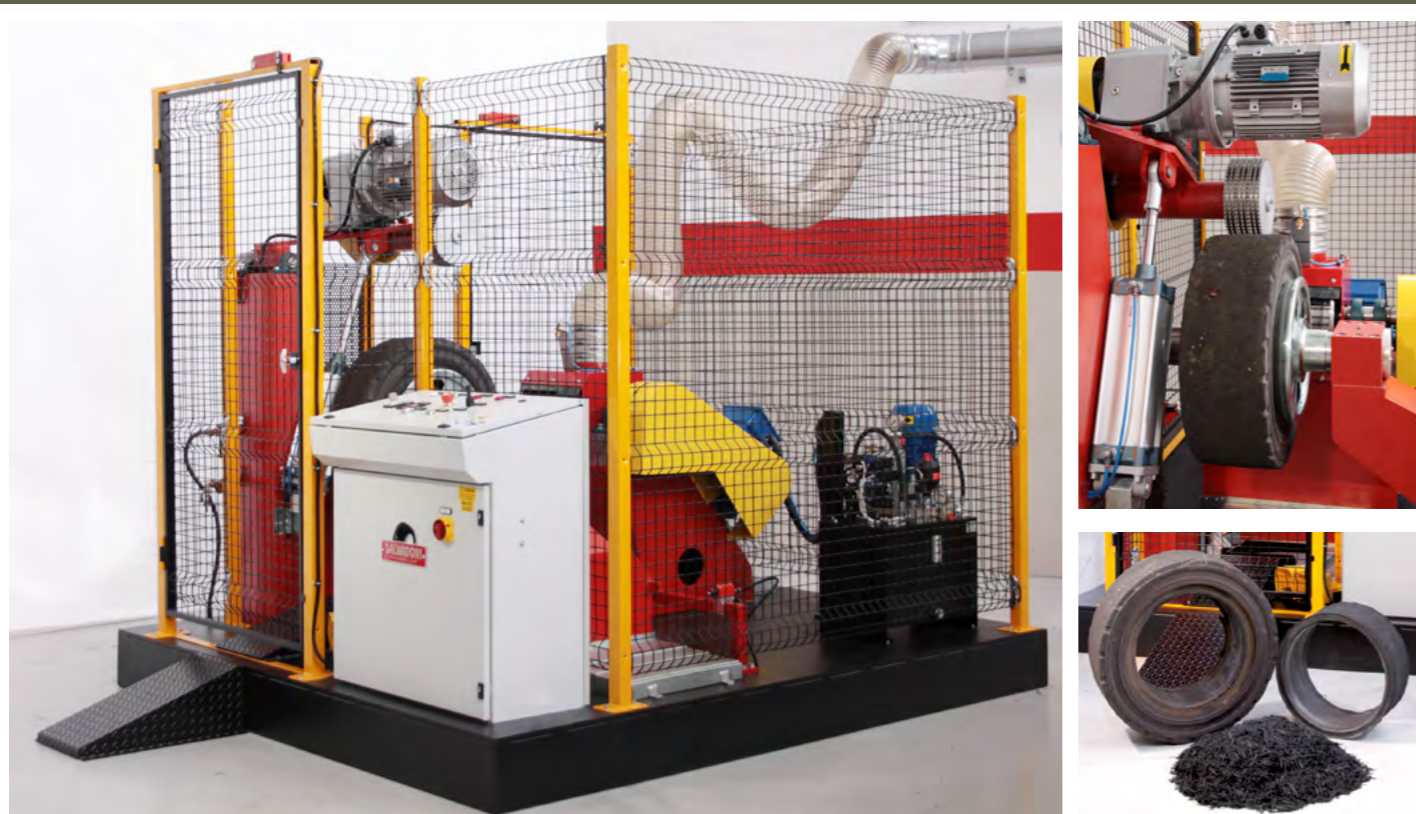


# TRUCK, OTR, AND FORKLIFT TIRE DOWNSIZING







## Rasp for solid tires

Designed to reduce super-elastic tires and cushions to frayed particles. Electric power 49.5 kW  
 Production capacity 140-600 Kg/hr - min workable Ø 250 mm - max workable Ø 1200 mm.



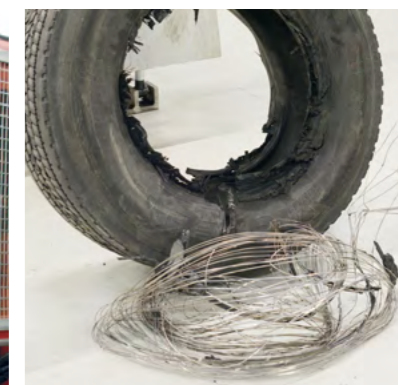
## Scrap truck tire buffing machine

Buffing machine for undamaged or drilled/cut truck tires to generate mulch or other rubber particles.



## Double bead remover 18" - 24.5"

Hercules 45 tire bead removal enables tire shredders to operate more efficiently. Removing the steel bead lengthens blade life and speeds shredding cycle time. Hercules 45 delivers fast cycle time by extracting both sides of the bead simultaneously. Power 22 kW - Maximum traction 45 tons - Max. production capacity 30 tires/hr - Weight 3.2 tons.

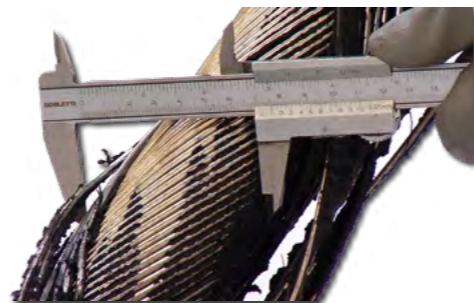






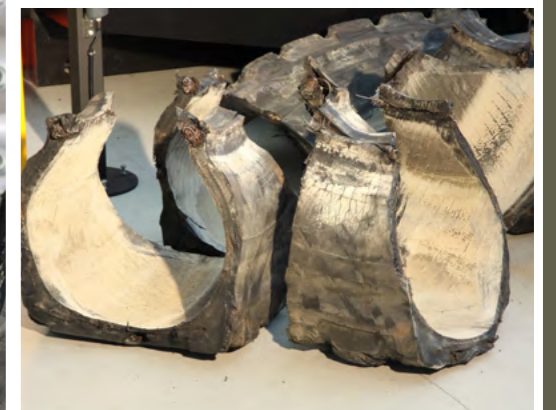
**HERCULES 90**  
EM bead remover 18" - 51"

Hercules 90 is specially designed to remove earth mover tire beads (51 inches). Hercules 90 can extract beads on both radial and textile tires.



**WOLVERINE 210**  
OTR and solid tire shear 18" - 51"

Wolverine 210 downsizes OTR and solid tires with hydraulic shears. This facilitates tire processing into shredding of standard granulating plants and saves money on tire transportation. Also available in 18"- 39" version (Wolverine 140).







FROM WASTE TO VALUE  
FOR A BETTER WORLD



Salvadori S.r.l.  
Via Zeni 8 - 38068 - Rovereto (Tn) - ITALY  
Tel. +39 0464 422286  
recycling@salvadori.com  
www.salvadori.com

USA, BELGIUM, BRAZIL, CHINA, ITALY, JAPAN, THAILAND, UK

